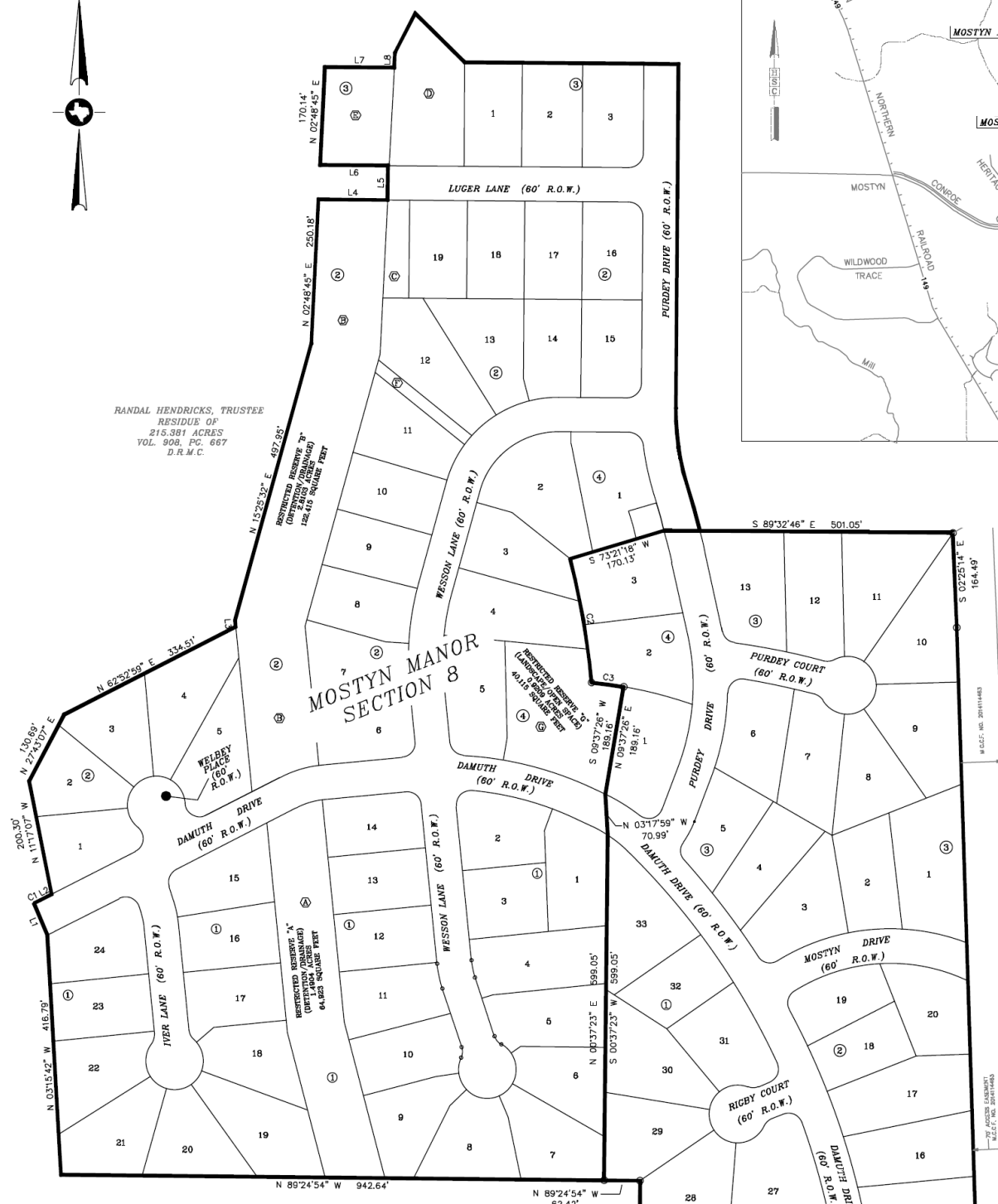


VICINITY MAP  
KEYMAP 213 C&G

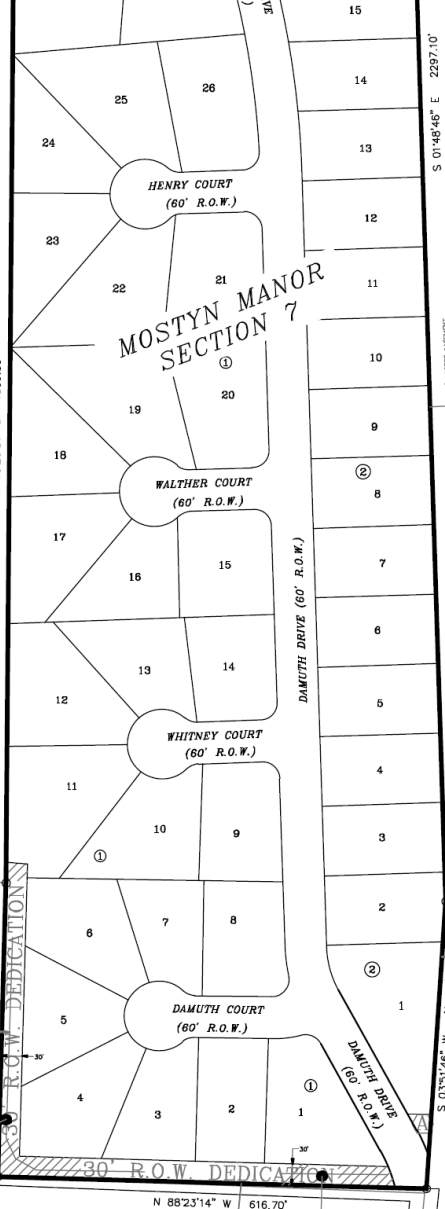


**MOSTYN MANOR SECTION SEVEN**

A SUBDIVISION OF 40.5819 ACRES OF LAND OUT OF THE CYRUS WICKSON SURVEY, ABSTRACT 600 MONTGOMERY COUNTY, TEXAS. 69 LOTS, 1 RESERVE, 4 BLOCKS

**MOSTYN MANOR SECTION EIGHT**

A SUBDIVISION OF 34.9246 ACRES OF LAND OUT OF THE CYRUS WICKSON SURVEY, ABSTRACT 600 MONTGOMERY COUNTY, TEXAS. 51 LOTS, 7 RESERVES, 4 BLOCKS



LOT 5 HERITAGE FARMS SECTION 1 CAB. E. SHT. 2-B M.R.M.C.

THIS 0.6809 OF ONE ACRE OR 29,859 SQUARE FEET IS HEREBY DEDICATED

KENNETH SMITH & BEVERLY SMITH 2.658 ACRES M.C.C.F. NO. 2003-087191

KENNETH SMITH & BEVERLY SMITH 2.000 ACRES M.C.C.F. NO. 8647682

F. J. DAMUTH REMAINDER OF CALLED 394.88 ACRES VOL. 181, PG. 289 D.R.M.C.

DONALD DEAN & KENNETH SMITH 2.000 ACRES CALLED 149.470 ACRES VOL. 181, PG. 506 D.R.M.C.