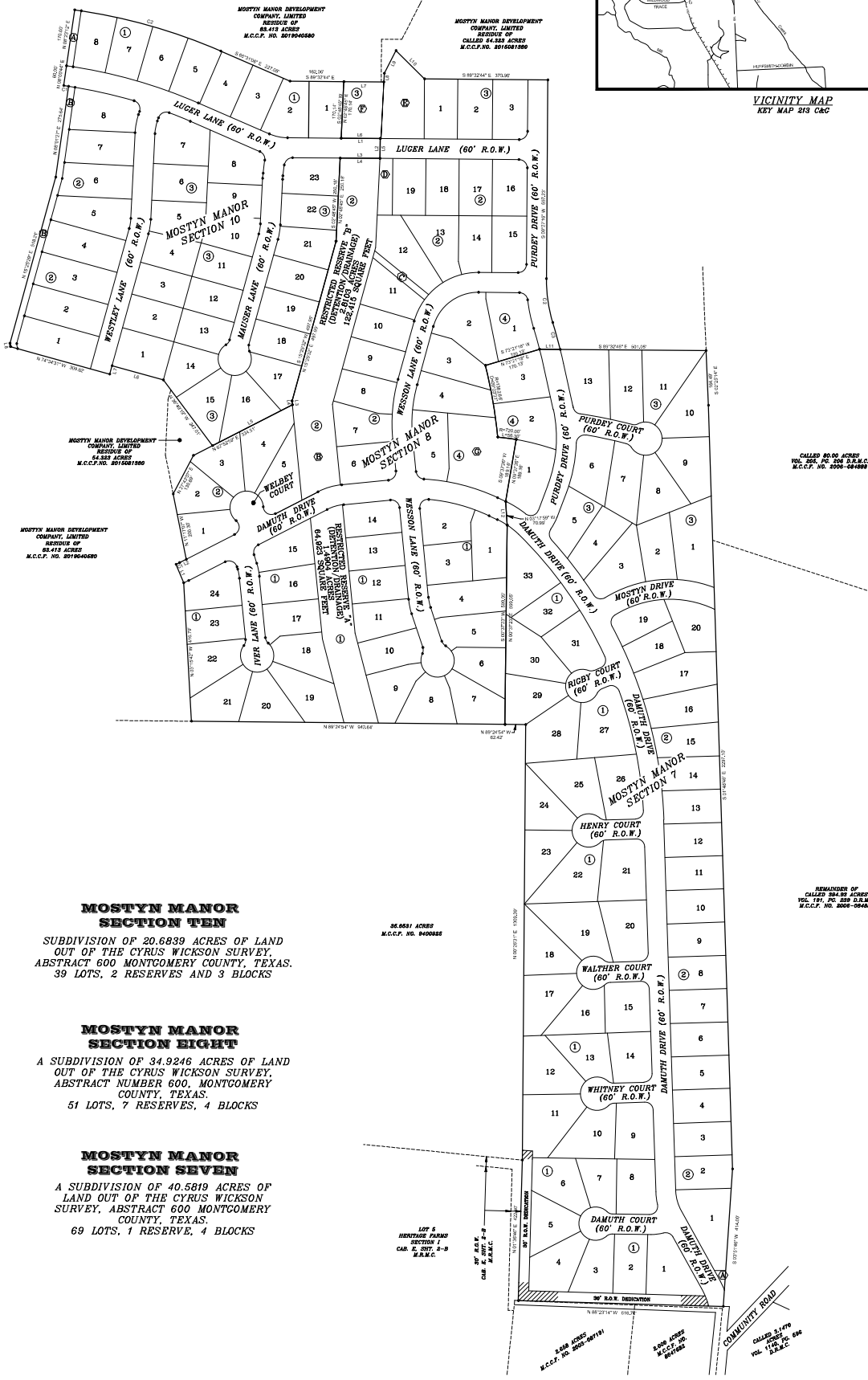


VICINITY MAP
KEY MAP 213 C&C



MOSTYN MANOR SECTION TEN

SUBDIVISION OF 20.6839 ACRES OF LAND OUT OF THE CYRUS WICKSON SURVEY, ABSTRACT 600 MONTGOMERY COUNTY, TEXAS. 39 LOTS, 2 RESERVES AND 3 BLOCKS

MOSTYN MANOR SECTION EIGHT

A SUBDIVISION OF 34.9246 ACRES OF LAND OUT OF THE CYRUS WICKSON SURVEY, ABSTRACT NUMBER 600, MONTGOMERY COUNTY, TEXAS. 51 LOTS, 7 RESERVES, 4 BLOCKS

MOSTYN MANOR SECTION SEVEN

A SUBDIVISION OF 40.5819 ACRES OF LAND OUT OF THE CYRUS WICKSON SURVEY, ABSTRACT 600 MONTGOMERY COUNTY, TEXAS. 69 LOTS, 1 RESERVE, 4 BLOCKS

36.8631 ACRES
M.C.C.F. NO. 201904280

CALLED 80.00 ACRES
VOL. 100, PG. 100 D.R.M.C.
M.C.C.F. NO. 2008-04289

REMANINDER OF
CALLED 26.52 ACRES
VOL. 101, PG. 201 D.R.M.C.
M.C.C.F. NO. 2008-04288

LOT 5
HERNANDEZ PARSO
SECTION 1
C&C SURV. 2-9
D.R.M.C.

2.58 ACRES
M.C.C.F. NO. 2003-00191

2.00 ACRES
M.C.C.F. NO. 2017-00184

CALLED 3.179
VOL. 100, PG. 106
D.R.M.C.